

# Virtru's Secure Collaboration Platform (SCP)



A federated data sharing domain and access control engine that securely and rapidly shares critical, time-sensitive data between agencies, coalition partners, and combatant commands.



True joint interoperability only happens when you trust that the data you're sharing is truly secure. The ability to share mission critical information quickly and efficiently can be the differentiator between mission success or failure.

Virtru's **Secure Collaboration Platform (SCP)** allows users to securely share data with third party partners by simply integrating automated tagging, encryption, and access controls into the tools and applications you use today.

**SCP. Powered by ABAC.** At the core of SCP is **Attribute-Based Access Controls (ABAC)** technology, where authorization and access rights to information, assets, and data are granted dynamically using defined attribute-based rules and policies.

## What is ABAC?

- ABAC is a policy management mechanism that supports Zero Trust principles. ABAC enables the management of access control policies and enforcement.
- By applying ABAC attributes, data owners can properly categorize sensitive information and ensure its appropriate protection by controlling who can access it, no matter where it goes.
- This means that even when data leaves an organization's network, it requires the same authentication to ensure that information cannot be opened by anyone without the necessary access rights. If a requesting user, system, or non-user entity does not possess the required attribute, they will be denied access to that data.



**Never sacrifice security or operational effectiveness. Experience the benefits of increased collaboration, with fewer bottlenecks and reduced risk by tying encryption and zero trust access controls to the data itself.**

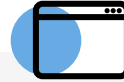
## SCP Applications and Features:

SCP protects the sensitive data that flows in and out of the applications you use every day. Once policies are determined, it can be easily implemented on hundreds of systems and devices. ABAC is swiftly applied through **Policy Enforcement Points (PEPs)** to each of the apps featured within the SCP.



### Sharepoint

- Automatically apply encryption into a document or file uploaded into the SharePoint library.
- During file upload, those files are only accessible to the user who uploaded it until it is properly encrypted.
- User can mark the document within the sharepoint library and encrypt with keys based on the document's markings.



### FileWatcher

- This add-in to your desktop and network drives "watches" documents that are placed or copied to the repository to determine classification levels and handling caveats.
- Uses existing classification metadata to create the ABAC tags for each file.



### Chat

- Based on their credentials, users can be admitted to participate in secure chat conversations and observe information ultimately aligned with their need to know.
- Built upon an Open Source communication protocol to allow for extensible messaging, presence information and contact list maintenance.



### Email Platform

- Ensures organization-wide protection through gateway encryption.
- Expire messages, control forwarding, view read receipts, add watermarks to files, and add audit control and audit logs.
- Revoke a user's access at any time, in real time.



Learn more at [virtru.com/federal-government](https://virtru.com/federal-government)